

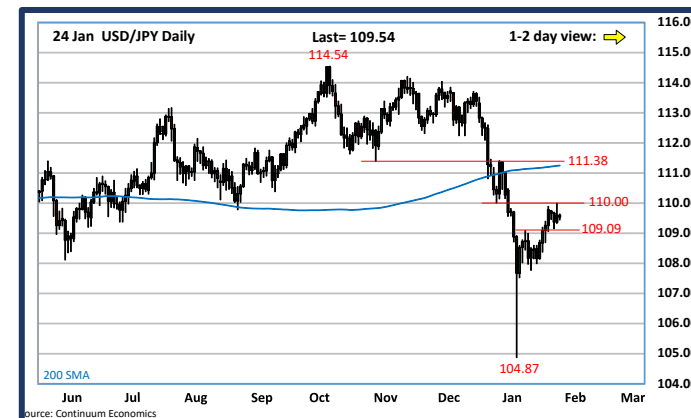
EUR/USD Daily



USD/CHF Daily



USD/JPY Daily



EUR/CHF Daily



GBP/USD Daily



EUR/GBP Daily



↗ Strong uptrend
 ↘ Weak uptrend or higher in range
 → Sideways or in range
 ↘ Weak downtrend or lower in range
 ↓ Strong downtrend

Copyright and Disclaimer. Analyst Certification: I, Paul Bednarczyk, certify that the views expressed herein are those of the 4CAST Research Team and are clear, fair and not misleading at the time of publication. They have not been influenced by any relationship, either a personal relationship of mine or a relationship of the firm, to any entity described or referred to herein nor to any client of 4CAST nor has any inducement been received in relation to those views. I further certify that in the preparation and publication of this report I have at all times followed all relevant 4CAST compliance protocols including those reasonably seeking to prevent the receipt or misuse of material non-public information. Disclaimer: 4CAST-RGE LIMITED (company number: 10179978) and all of its affiliates (hereafter, 4CAST) do not conduct "investment research" as defined in the FCA Conduct of Business Sourcebook (COBS) section 12 nor do they provide "advice about securities" as defined in the Regulation of Investment Advisors by the U.S. SEC. 4CAST is not regulated by the SEC or by the FCA or by any other regulatory body. This research report has not been prepared in accordance with legal requirements designed to promote the independence of investment research and is not subject to any prohibition on dealing ahead of the dissemination of investment research. Nonetheless, 4CAST has an internal policy that prohibits "front-running" and that is designed to minimize the risk of receiving or misusing confidential or potentially material non-public information. The views and conclusions expressed here may be changed without notice. 4CAST, its partners and employees make no representation about the completeness or accuracy of the data, calculations, information or opinions contained in this report. This report may not be copied, redistributed or reproduced in part or whole without 4CAST's express permission. Information contained in this report or relied upon in its construction may previously have been disclosed under a consulting agreement with one or more clients. The prices of securities referred to in the report may rise or fall and past performance and forecasts should not be treated as a reliable indicator of future performance or results. This report is not directed to you if 4CAST is barred from doing so in your jurisdiction. Nor is it an offer or solicitation to buy or sell securities or to enter into any investment transaction or use any investment service..

NOK/SEK Daily



NOK, SEK Opening Updates

CONTINUUM economics

NOK, SEK Opening Updates

| | Resistance | Support | |
|-----------|------------|---------|---|
| EUR/NOK → | 9.7825 | 9.7200 | Higher in consolidation from the 9.7070 low though the upside seen limited with resistance now at 9.8000 and 9.8200 level. Above these needed to expose strong resistance at 9.8590. Consolidation seen giving way to renewed selling pressure later. [P.L] |
| | 9.8000 | 9.7070 | |
| | 9.8200 | 9.6900 | |
| | 9.8590 | 9.6515 | |
| EUR/SEK → | 10.2810 | 10.2310 | Nothing much has changed with prices still stuck in consolidation and slip below 10.2310 support will expose setback to 10.2140 ahead of the stronger level behind at 10.1700. Above 10.2686 hurdle, further gain eyes 10.2810 then 10.2954. [WT] |
| | 10.2954 | 10.2140 | |
| | 10.3120 | 10.2050 | |
| | 10.3485 | 10.1910 | |
| USD/NOK → | 8.6090 | 8.5530 | Backed off the 8.6090 high but further strength not ruled out to extend corrective bounce from the 8.4430 low. Higher see strong resistance at 8.6320. Correction seen giving way to renewed selling pressure later with support now at 8.5045 then 8.4430 low. [P.L] |
| | 8.6320 | 8.5155 | |
| | 8.6800 | 8.5045 | |
| | 8.7380 | 8.4430 | |
| USD/SEK → | 9.0525 | 8.9806 | View unchanged from last session with prices stuck in consolidation and lift above the 9.0525 resistance will resume upmove to 9.0747 then 9.1047. On the downside, slip below the 8.9806 support will turn pressure lower to 8.9514 ahead of 8.9137. [WT] |
| | 9.0747 | 8.9514 | |
| | 9.1047 | 8.9137 | |
| | 9.1164 | 8.8517 | |

EUR/NOK Daily



EUR/SEK Daily



USD/NOK Daily



USD/SEK Daily



- Strong uptrend
- Weak uptrend or higher in range
- Sideways or in range
- Weak downtrend or lower in range
- Strong downtrend

Copyright and Disclaimer. Analyst Certification: I, Paul Bednarczyk, certify that the views expressed herein are those of the 4CAST Research Team and are clear, fair and not misleading at the time of publication. They have not been influenced by any relationship, either a personal relationship of mine or a relationship of the firm, to any entity described or referred to herein nor to any client of 4CAST nor has any inducement been received in relation to those views. I further certify that in the preparation and publication of this report I have at all times followed all relevant 4CAST compliance protocols including those reasonably seeking to prevent the receipt or misuse of material non-public information. Disclaimer: 4CAST-RGE LIMITED (company number: 10179978) and all of its affiliates (hereafter, 4CAST) do not conduct "investment research" as defined in the FCA Conduct of Business Sourcebook (COBS) section 12 nor do they provide "advice about securities" as defined in the Regulation of Investment Advisors by the U.S. SEC. 4CAST is not regulated by the SEC or by the FCA or by any other regulatory body. This research report has not been prepared in accordance with legal requirements designed to promote the independence of investment research and is not subject to any prohibition on dealing ahead of the dissemination of investment research. Nonetheless, 4CAST has an internal policy that prohibits "front-running" and that is designed to minimize the risk of receiving or misusing confidential or potentially material non-public information. The views and conclusions expressed here may be changed without notice. 4CAST, its partners and employees make no representation about the completeness or accuracy of the data, calculations, information or opinions contained in this report. This report may not be copied, redistributed or reproduced in part or whole without 4CAST's express permission. Information contained in this report or relied upon in its construction may previously have been disclosed under a consulting agreement with one or more clients. The prices of securities referred to in the report may rise or fall and past performance and forecasts should not be treated as a reliable indicator of future performance or results. This report is not directed to you if 4CAST is barred from doing so in your jurisdiction. Nor is it an offer or solicitation to buy or sell securities or to enter into any investment transaction or use any investment service..

Danske Technical Update

Powered by  4CAST
4castweb.com

Danske Bank

Published - 24 January 2019 05:19

| | Trends | Res 4 | Res 3 | Res 2 | Res 1 | Spot | Sup 1 | Sup 2 | Sup 3 | Sup 4 | MA20 | MA50 | MA200 | RSI 9 | |
|---------------|-----------------|--------|-----------|---------|---------|----------|---------|-----------|---------|---------|----------|----------|----------|---------|----|
| Scandies | EUR/SEK | → | 10.3485 | 10.3120 | 10.2954 | 10.2810 | 10.2656 | 10.2310 | 10.2140 | 10.2050 | 10.1910 | 10.2358 | 10.2691 | 10.3443 | 55 |
| | EUR/NOK | → | 9.8590 | 9.8200 | 9.8000 | 9.7825 | 9.7542 | 9.7200 | 9.7070 | 9.6900 | 9.6515 | 9.8012 | 9.7883 | 9.6115 | 43 |
| | USD/SEK | → | 9.1164 | 9.1047 | 9.0747 | 9.0525 | 9.0149 | 8.9806 | 8.9514 | 8.9137 | 8.8517 | 8.9601 | 9.0146 | 8.9323 | 56 |
| | USD/NOK | → | 8.7380 | 8.6800 | 8.6320 | 8.6090 | 8.5658 | 8.5530 | 8.5155 | 8.5045 | 8.4430 | 8.5790 | 8.5920 | 8.3004 | 48 |
| | EUR/DKK | ↘ | 7.4770 | 7.4705 | 7.47~ | 7.4685 | 7.4662 | 7.4600-5~ | 7.4575 | 7.4558 | 7.4545~ | 7.4659 | 7.4648 | 7.4569 | 55 |
| | NOK/SEK | → | 1.0668 | 1.0612 | 1.0560 | 1.0530 | 1.0514 | 1.0478 | 1.0457 | 1.0437 | 1.0386 | 1.0437 | 1.0484 | 1.0756 | 59 |
| Majors | EUR/USD | → | 1.1540 | 1.1490 | 1.1442 | 1.1411 | 1.1386 | 1.1374 | 1.1336 | 1.1309 | 1.1270 | 1.1422 | 1.1389 | 1.1580 | 46 |
| | USD/JPY | → | 111.38 | 110.81 | 110.46 | 110.00 | 109.53 | 109.09 | 108.60 | 108.00 | 107.77 | 109.01 | 111.21 | 111.24 | 52 |
| | EUR/GBP | ↘ | .8867 | .8863 | .8803 | .8762 | 0.8708 | .8697 | .8656 | .8621 | .8603 | 0.8905 | 0.8928 | 0.8866 | 24 |
| | GBP/USD | ↗ | 1.3258 | 1.3236 | 1.3175 | 1.3150 | 1.3069 | 1.3000 | 1.2940 | 1.2853 | 1.2823 | 1.2825 | 1.2756 | 1.3063 | 71 |
| | USD/CHF | → | 1.0087 | 1.0036 | 1.0008 | 0.9990 | 0.9940 | 0.9904 | 0.9856 | 0.9800 | 0.9770 | 0.9872 | 0.9912 | 0.9902 | 58 |
| | EUR/JPY | → | 126.14 | 125.51 | 125.41 | 125.09 | 124.70 | 124.05 | 123.40 | 122.40 | 122.00 | 124.52 | 126.67 | 128.82 | 49 |
| | EUR/CHF | ↗ | 1.1470 | 1.1436 | 1.1368 | 1.1350 | 1.1317 | 1.1298 | 1.1278 | 1.1247 | 1.1210 | 1.1277 | 1.1292 | 1.1468 | 58 |
| | AUD/USD | → | .7235 | .7222 | .7176 | .7160 | 0.7107 | .7054 | .7017 | .6950 | .6900 | 0.7127 | 0.7174 | 0.7302 | 41 |
| | USD/CAD | ↘ | 1.3475 | 1.3400 | 1.3362 | 1.3357 | 1.3350 | 1.3289 | 1.3201 | 1.3118 | 1.3112 | 1.3364 | 1.3363 | 1.3114 | 53 |
| | NZD/USD | ↗ | .6912 | .6880 | .6849 | .6800 | 0.6774 | .6754 | .6733 | .6705 | .6672 | 0.6752 | 0.6793 | 0.6768 | 53 |
| | EUR/CAD | → | 1.5390/00 | 1.5330 | 1.5300 | 1.5250 | 1.5198 | 1.5097 | 1.5078 | 1.5039 | 1.5000 | 1.5265 | 1.5220 | 1.5186 | 49 |
| GBP/JPY | ↗ | 145.51 | 144.75 | 144.22 | 143.93 | 143.1700 | 142.21 | 141.62 | 140.61 | 139.50 | 139.7995 | 141.8364 | 145.2867 | 72 | |
| EM | USD/CNH | ↘ | 6.8685 | 6.8540 | 6.8249 | 6.8187 | 6.7965 | 6.7720 | 6.7524 | 6.7364 | 6.7113 | 6.8187 | 6.8713 | 6.7412 | 44 |
| | USD/ZAR | ↗ | 14.2775 | 14.2000 | 14.0000 | 13.9000 | 13.8300 | 13.6350 | 13.5960 | 13.5346 | 13.2500 | 13.9675 | 14.0662 | 13.8113 | 43 |
| | USD/BRL | ↘ | 3.9660 | 3.8555 | 3.8205 | 3.8045 | 3.7648 | 3.7270 | 3.6742 | 3.6422 | 3.5811 | 3.7655 | 3.8236 | 3.8124 | 50 |
| | USD/MXN | ↘ | 19.476 | 19.378 | 19.240 | 19.170 | 19.060 | 18.965 | 18.871 | 18.843 | 18.726 | 19.254 | 19.828 | 19.463 | 37 |
| | EUR/PLN | → | 4.3428 | 4.3375 | 4.3122 | 4.3080~ | 4.2891 | 4.2800~ | 4.2735~ | 4.2650~ | 4.2445 | 4.2904 | 4.2906 | 4.2935 | 52 |
| | EUR/CZK | → | 25.85-90~ | 25.80~ | 25.787 | 25.712 | 25.689 | 25.613 | 25.56~ | 25.520 | 25.415 | 25.618 | 25.781 | 25.741 | 60 |
| | EUR/HUF | ↘ | 325.00 | 324.29 | 322.50 | 320.63 | 317.93 | 316.56 | 316.10 | 315.00 | 312.65 | 320.35 | 321.59 | 321.81 | 32 |
| | EUR/TRY | ↘ | 6.2778 | 6.2204 | 6.1490 | 6.0855 | 6.0339 | 5.9797 | 5.9562 | 5.8185 | 5.7792 | 6.1318 | 6.0697 | 6.1027 | 40 |
| | USD/PLN | ↘ | 3.8750~ | 3.8410~ | 3.8140 | 3.8010 | 3.7677 | 3.7165 | 3.7122 | 3.6890 | 3.6205 | 3.7562 | 3.7675 | 3.7094 | 55 |
| | USD/RUB | → | 67.34 | 67.12 | 66.68 | 66.62 | 66.11 | 65.91 | 65.48 | 65.39 | 64.93 | 67.31 | 67.18 | 65.31 | 33 |
| Other Markets | S&P 500 Futures | → | 2711 | 2700 | 2678 | 2673 | 2639 | 2627 | 2620 | 2616 | 2600 | 2642 | 2694 | 2760 | 16 |
| | DAX Futures | → | 11566 | 11400 | 11254 | 11140 | 11059 | 11000 | 10814 | 10600 | 10268 | 10827 | 11000 | 12037 | 59 |
| | US 10y Futures | → | 123-08 | 122-24 | 122-09 | 121-24 | 121.15 | 121-02 | 121-00 | 120-16 | 120-07 | 124.47 | 121.04 | 119.84 | 86 |
| | Bund Futures | → | 165.87 | 165.20 | 165.10 | 165.00 | 164.67 | 164.00 | 163.84 | 163.42 | 163.15 | 160.68 | 160.13 | 158.85 | 42 |
| | WTI Oil Futures | → | 55.86 | 54.55 | 54.24 | 53.64 | 52.39 | 51.80 | 50.98 | 50.38 | 49.71 | 49.82 | 51.01 | 64.44 | 58 |

Copyright and Disclaimer. Analyst Certification: I, Paul Bednarczyk, certify that the views expressed herein are those of the 4CAST Research Team and are clear, fair and not misleading at the time of publication. They have not been influenced by any relationship, either a personal relationship of mine or a relationship of the firm, to any entity described or referred to herein nor to any client of 4CAST nor has any inducement been received in relation to those views. I further certify that in the preparation and publication of this report I have at all times followed all relevant 4CAST compliance protocols including those reasonably seeking to prevent the receipt or misuse of material non-public information. Disclaimer: 4CAST-RGE LIMITED (company number: 10179978) and all of its affiliates (hereafter, 4CAST) do not conduct "investment research" as defined in the FCA Conduct of Business Sourcebook (COBS) section 12 nor do they provide "advice about securities" as defined in the Regulation of Investment Advisors by the U.S. SEC. 4CAST is not regulated by the SEC or by the FCA or by any other regulatory body. This research report has not been prepared in accordance with legal requirements designed to promote the independence of investment research and is not subject to any prohibition on dealing ahead of the dissemination of investment research. Nonetheless, 4CAST has an internal policy that prohibits "front-running" and that is designed to minimize the risk of receiving or misusing confidential or potentially material non-public information. The views and conclusions expressed here may be changed without notice. 4CAST, its partners and employees make no representation about the completeness or accuracy of the data, calculations, information or opinions contained in this report. This report may not be copied, redistributed or reproduced in part or whole without 4CAST's express permission. Information contained in this report or relied upon in its construction may previously have been disclosed under a consulting agreement with one or more clients. The prices of securities referred to in the report may rise or fall and past performance and forecasts should not be treated as a reliable indicator of future performance or results. This report is not directed to you if 4CAST is barred from doing so in your jurisdiction. Nor is it an offer or solicitation to buy or sell securities or to enter into any investment transaction or use any investment service.

| | Trends | Res 4 | Res 3 | Res 2 | Res 1 | Spot | Sup 1 | Sup 2 | Sup 3 | Sup 4 | MA20 | MA 50 | MA 200 | RSI 9 | |
|---------------|-----------------|--------------------|------------------------------|---------------------------|---------------------------|---------------------------|--------------------|-------------------------------|-----------------------------|----------------------------|---------------------------|---------|---------|---------|----|
| Scandies | EUR/SEK | → | 10.3485 27 Dec high | 10.3120 28 Dec high | 10.2954 3 Jan high | 10.2810 18 Jan high | 10.2656 | 10.2310 18 Jan low | 10.2140 16 Jan low | 10.2050 11 Jan low | 10.1910 9 Jan 19 low | 10.2358 | 10.2691 | 10.3443 | 55 |
| | EUR/NOK | → | 9.8590 2 Jan low | 9.8200 14 Jan high | 9.8000 figure | 9.7825 23 Jan high | 9.7542 | 9.7200 21 Jan low | 9.7070 18 Jan low | 9.6900 11 Dec low | 9.6515 10 Dec low | 9.8012 | 9.7883 | 9.6115 | 43 |
| | USD/SEK | → | 9.1164 14 Dec high | 9.1047 26 Dec high | 9.0747 3 Jan high | 9.0525 17 Jan high | 9.0149 | 8.9806 18 Jan low | 8.9514 16 Jan low | 8.9137 14 Jan low | 8.8517 2,7 Jan 19 low | 8.9601 | 9.0146 | 8.9323 | 56 |
| | USD/NOK | → | 8.7380 27 Dec low | 8.6800 3 Jan low | 8.6320 2 Jan low | 8.6090 23 Jan high | 8.5658 | 8.5530 23 Jan low | 8.5155 18 Jan low | 8.5045 15 Jan low | 8.4430 11 Jan low | 8.5790 | 8.5920 | 8.3004 | 48 |
| | EUR/DKK | ↘ | 7.4770 Apr- 15 high | 7.4705 15- Apr- 15 high | 7.47~ early Apr- 15 lows | 7.4685 May- 15 high. Dec | 7.4662 | 7.4600-5~ late-Nov, st Dec lo | 7.4575 8- Nov low | 7.4558 5- Oct low | 7.4545~ early Oct lows | 7.4659 | 7.4648 | 7.4569 | 55 |
| NOK/SEK | → | 1.0668 12 Dec high | 1.0612 13 Dec high | 1.0560 18 Jan high | 1.0530 22 Jan high | 1.0514 | 1.0478 22 Jan low | 1.0457 15 Jan low | 1.0437 14 Jan low | 1.0386 3 Jan high | 1.0437 | 1.0484 | 1.0756 | 59 | |
| Majors | EUR/USD | → | 1.1540 11 Jan high | 1.1490 15 Jan high | 1.1442 14 Jan low | 1.1411 18 Jan high | 1.1386 | 1.1374 22 Jan high | 1.1336 22 Jan low | 1.1309 3 Jan low | 1.1270 14 Dec low | 1.1422 | 1.1389 | 1.1580 | 46 |
| | USD/JPY | → | 111.38 26 Dec high | 110.81 20 Dec low | 110.46 27 Dec low | 110.00 figure | 109.53 | 109.09 8 Jan high | 108.60 11 Jan high | 108.00 figure | 107.77 10 Jan low | 109.01 | 111.21 | 111.24 | 52 |
| | EUR/GBP | ↘ | .8867 200- day MA | .8863 21 Jan high | .8803 21 Jan low | .8762 18 Jan low | 0.8708 | .8697 15 Nov low | .8656 13 Nov low | .8621 2018 low, 17 Apr | .8603 24 May 17 low | 0.8905 | 0.8928 | 0.8866 | 24 |
| | GBP/USD | ↗ | 1.3258 12 Oct high | 1.3236 16 Oct high | 1.3175 7 Nov high | 1.3150 8 Nov high | 1.3069 | 1.3000 17 Jan high | 1.2940 23 Jan low | 1.2853 22 Jan low | 1.2823 16 Jan low | 1.2825 | 1.2756 | 1.3063 | 71 |
| | USD/CHF | → | 1.0087 16 Nov high | 1.0036 15 Nov low | 1.0008 Dec high | 0.9990 23 Jan high | 0.9940 | 0.9904 200- day MA | 0.9856 11 Jan high | 0.9800 14 Jan low | 0.9770 intraday level | 0.9872 | 0.9912 | 0.9902 | 58 |
| | EUR/JPY | → | 126.14 intraday level | 125.51 25 Dec low | 125.41 31 Dec low | 125.09 9 Jan high | 124.70 | 124.05 17 Jan low | 123.40 15 Jan low | 122.40 intraday level | 122.00 figure | 124.52 | 126.67 | 128.82 | 49 |
| | EUR/CHF | ↗ | 1.1470 6-8 Nov highs | 1.1436 19 Nov high | 1.1368 29 May low | 1.1350 20 Dec high | 1.1317 | 1.1298 18 Jan low | 1.1278 3 Jan high | 1.1247 14, 15 Jan lows | 1.1210 9 Jan low | 1.1277 | 1.1292 | 1.1468 | 58 |
| | AUD/USD | → | .7235 11 Jan high | .7222 17 Jan high | .7176 14 Jan low | .7160 22 Jan high | 0.7107 | .7054 intraday level | .7017 Dec low, 27 | .6950 Intraday level | .6900 figure | 0.7127 | 0.7174 | 0.7302 | 41 |
| | USD/CAD | ↘ | 1.3475 TL level | 1.3400 figure | 1.3362 50- day MA | 1.3357 22 Jan high | 1.3350 | 1.3289 22 Jan low | 1.3201 100- day MA | 1.3118 61.8% from Oct low | 1.3112 200- day MA | 1.3364 | 1.3363 | 1.3114 | 53 |
| | NZD/USD | ↗ | .6912 11 Dec high | .6880 18 Dec high | .6849 15 Jan high | .6800 figure | 0.6774 | .6754 22 Jan high | .6733 intraday level | .6705 22 Jan low | .6672 4 Jan low | 0.6752 | 0.6793 | 0.6768 | 53 |
| | EUR/CAD | → | 1.5390/00 50% ret; break lev | 1.5330 38.2% ret of Dec- | 1.5300 intraday congestic | 1.5250 intraday pivot | 1.5198 | 1.5097 61.8% ret of Oct- D | 1.5078 14 Dec (w) low | 1.5039 18 Jan (w) low | 1.5000 congestion | 1.5265 | 1.5220 | 1.5186 | 49 |
| GBP/JPY | ↗ | 145.51 3 Dec high | 144.75 4 Dec high | 144.22 7 Dec high | 143.93 13 Dec high | 143.17 | 142.21 17 Jan high | 141.62 23 Jan low | 140.61 22 Jan low | 139.50 17 Jan low | 139.80 | 141.84 | 145.29 | 72 | |
| EM | USD/CNH | ↘ | 6.8685 8 Jan high | 6.8540 9 Jan high | 6.8249 4 Dec low | 6.8187 21 Jan high | 6.7965 | 6.7720 18 Jan low | 6.7524 17 Jan low | 6.7364 11 Jan low | 6.7113 18 Jul low | 6.8187 | 6.8713 | 6.7412 | 44 |
| | USD/ZAR | ↗ | 14.2775 21 Dec low | 14.2000 congestion | 14.0000 congestion | 13.9000 congestion | 13.830 | 13.6350 16 Jan (w) low | 13.5960 50% ret of Feb- Se | 13.5346 December low | 13.2500 break level | 13.968 | 14.066 | 13.811 | 43 |
| | USD/BRL | ↘ | 3.9660 Jun high | 3.8555 100- day MA | 3.8205 50- day MA | 3.8045 200- day MA | 3.7648 | 3.7270 18 Jan low | 3.6742 09 Jan low | 3.6422 26 Oct low | 3.5811 29 Oct low | 3.7655 | 3.8236 | 3.8124 | 50 |
| | USD/MXN | ↘ | 19.476 7 Jan high | 19.378 9 Jan high | 19.240 22 Jan high | 19.170 23 Jan high | 19.060 | 18.965 18 Jan low | 18.871 17 Jan low | 18.843 18 Oct low | 18.726 16 Oct low | 19.254 | 19.828 | 19.463 | 37 |
| | EUR/PLN | → | 4.3428 Aug high | 4.3375 20- Nov high | 4.3122 3- Jan YTD high | 4.3080~ downtrend fr end- | 4.2891 | 4.2800~ uptrend fr Sep | 4.2735~ Nov, early- Dec low | 4.2650~ mid- Aug, Sep low | 4.2445 Aug low | 4.2904 | 4.2906 | 4.2935 | 52 |
| | EUR/CZK | → | 25.85-90~ Dec high volume | 25.80~ down trend fr Nov | 25.787 2- Jan YTD high | 25.712 23 Jan high | 25.689 | 25.613 23 Jan low | 25.56~ uptrends fr Apr, Fe | 25.520 7- Jan YTD low | 25.415 19- Sep low | 25.618 | 25.781 | 25.741 | 60 |
| | EUR/HUF | ↘ | 325.00 congestion | 324.29 16 Jan (w) high | 322.50 pivot | 320.63 26 Dec low | 317.93 | 316.56 June 2018 low | 316.10 50% ret of 2017- 21 | 315.00 break level | 312.65 61.8% ret of 2017- | 320.35 | 321.59 | 321.81 | 32 |
| | EUR/TRY | ↘ | 6.2778 15 Jan high | 6.2204 16 Jan high | 6.1490 17 Jan high | 6.0855 23 Jan high | 6.0339 | 5.9797 26 Dec low | 5.9562 19 Dec low | 5.8185 29 Nov low | 5.7792 2 Aug low | 6.1318 | 6.0697 | 6.1027 | 40 |
| | USD/PLN | ↘ | 3.8750~ May- 17 high volm | 3.8410~ Aug & Oct/ 2018 h | 3.8140 28- Nov, Dec high: | 3.8010 3- Jan YTD high | 3.7677 | 3.7165 10- Jan low | 3.7122 22- Oct low | 3.6890 16- Oct low | 3.6205 26- Sep low | 3.7562 | 3.7675 | 3.7094 | 55 |
| USD/RUB | → | 67.34 10 Jan high | 67.12 16 Jan high | 66.68 17 Jan high | 66.62 22 Jan high | 66.11 | 65.91 29 Nov low | 65.48 23 Nov low | 65.39 22 Nov low | 64.93 24 Oct low | 67.31 | 67.18 | 65.31 | 33 | |
| Other Markets | S&P 500 Futures | → | 2711 61.8% from Sep | 2700 figure | 2678 18 Jan high | 2673 22 Jan high | 2639 | 2627 intraday low | 2620 50- day MA | 2616 22 Jan low | 2600 break level | 2642 | 2694 | 2760 | 16 |
| | DAX Futures | → | 11566 03 Dec high | 11400 break level | 11254 18 Jan high | 11140 22 Jan high | 11059 | 11000 figure | 10814 17 Jan low | 10600 break level | 10268 27 Dec low | 10827 | 11000 | 12037 | 59 |
| | US 10y Futures | → | 123-08 03 Jan high | 122-24 break level | 122-09 14 Jan high | 121-24 break level | 121.15 | 121-02 18 Jan low | 121-00 break level | 120-16 50- day MA | 120-07 50% from 09 Oct | 124.47 | 121.04 | 119.84 | 86 |
| | Bund Futures | → | 165.87 76.4% ret of 2016- | 165.20 6 Sep 2017 (cont) | 165.10 3 Jan (w) high | 165.00 figure | 164.67 | 164.00 congestion | 163.84 18 Jan low | 163.42 23.6% ret of Oct- J | 163.15 27 Dec low | 160.68 | 160.13 | 158.85 | 42 |
| | WTI Oil Futures | → | 55.86 21 Nov high | 54.55 4 Dec high | 54.24 22 Jan high | 53.64 23 Jan high | 52.39 | 51.80 22 Jan low | 50.98 17 Jan low | 50.38 14 Jan low | 49.71 9 Jan low | 49.82 | 51.01 | 64.44 | 58 |

Copyright and Disclaimer. Analyst Certification: I, Paul Bednarczyk, certify that the views expressed herein are those of the 4CAST Research Team and are clear, fair and not misleading at the time of publication. They have not been influenced by any relationship, either a personal relationship of mine or a relationship of the firm, to any entity described or referred to herein nor to any client of 4CAST nor has any inducement been received in relation to those views. I further certify that in the preparation and publication of this report I have at all times followed all relevant 4CAST compliance protocols including those reasonably seeking to prevent the receipt or misuse of material non-public information. Disclaimer: 4CAST-RGE LIMITED (company number: 10179978) and all of its affiliates (hereafter, 4CAST) do not conduct "investment research" as defined in the FCA Conduct of Business Sourcebook (COBS) section 12 nor do they provide "advice about securities" as defined in the Regulation of Investment Advisors by the U.S. SEC. 4CAST is not regulated by the SEC or by the FCA or by any other regulatory body. This research report has not been prepared in accordance with legal requirements designed to promote the independence of investment research and is not subject to any prohibition on dealing ahead of the dissemination of investment research. Nonetheless, 4CAST has an internal policy that prohibits "front-running" and that is designed to minimize the risk of receiving or misusing confidential or potentially material non-public information. The views and conclusions expressed here may be changed without notice. 4CAST, its partners and employees make no representation about the completeness or accuracy of the data, calculations, information or opinions contained in this report. This report may not be copied, redistributed or reproduced in part or whole without 4CAST's express permission. Information contained in this report or relied upon in its construction may previously have been disclosed under a consulting agreement with one or more clients. The prices of securities referred to in the report may rise or fall and past performance and forecasts should not be treated as a reliable indicator of future performance or results. This report is not directed to you if 4CAST is barred from doing so in your jurisdiction. Nor is it an offer or solicitation to buy or sell securities or to enter into any investment transaction or use any investment service.